

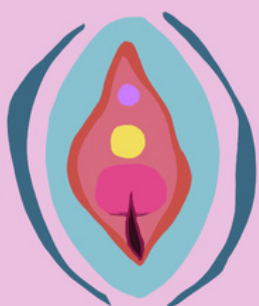
4

degrees OF PERINEAL TEARS

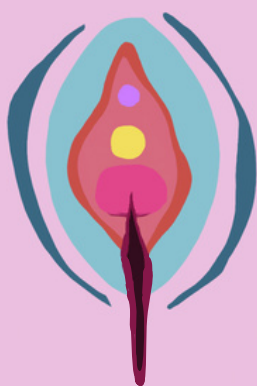
0



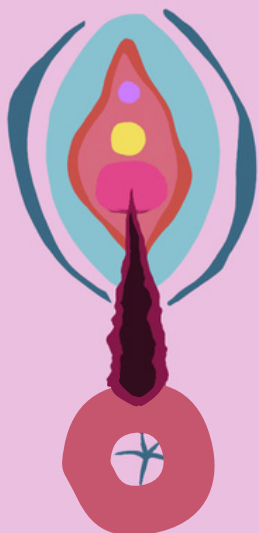
1



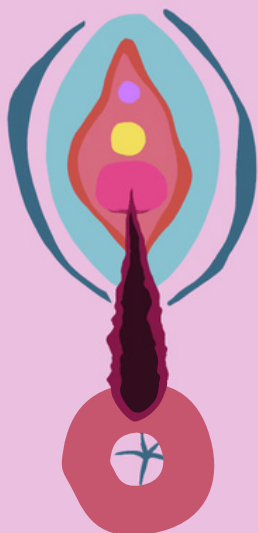
2



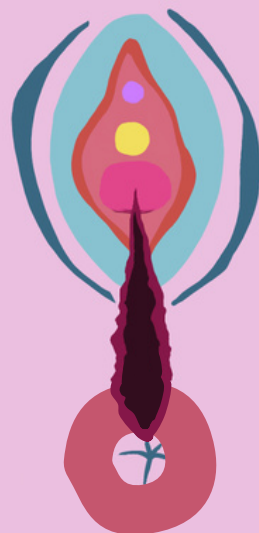
3A



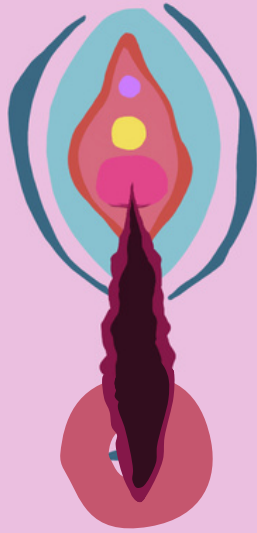
3B



3C



4



4 *degrees* OF PERINEAL TEARS

0

No tears

1

Superficial tissue tears

2

Severity varies tears into the pelvic floor muscles but not EAS

3A

Tears into PFM/EAS. <50% EAS torn

3B

Tears into PFM/EAS. >50% of EAS torn

3C

Tears into PFM/EAS/IAS

4

Most severe tears to PFM/EAS/IAS and anorectal mucosa*

More
details



EAS: external anal sphincter

IAS: internal anal sphincter

PFM: pelvic floor muscles

*https://www.safetyandquality.gov.au/sites/default/files/2021-04/perineal_tears_ccs_v3.pdf